



THE ACCESS MODEL

The largest selling walk-in bath in Australia



The Occupational Therapists choice

Windsor Baths Australia 1800 983 996 Fax 02 88 504692

Dalto PL T/A Windsor Baths

ABN 64 081 087 149

www.windsorbaths.com.au Established 2000



WHAT IS A WALK-IN BATH?

Walk-in and sit-down baths are designed for people who are finding it difficult to safely use a normal bath. They are commonly used as a combined shower base and bath, quite often located in existing shower areas.

These baths are a world-wide item and have been available in the UK for over 30 years. They are a relatively new item in Australia where they have been available only in the last 10 years.

These baths have a door which allows the user to get into and out of a bath easily and safely.

The user gets into the bath, closes the door and fills up the bath. These baths are fitted with specially made fast-fill taps to fill the bath quickly. The hydrotherapy spa system, can be used to heat the bath surface inside the bath before the user gets in.

Once in the bath the user is safe from falls. Even in the event of dizziness caused by a steamy atmosphere the user is safe from falling.

With the optional hydrotherapy air-spa system included, the user has an in-house, true hydrotherapy spa system to alleviate pains from arthritic and similar conditions. This system purges itself between uses to minimise the chance of cross or reinfection.

The doors do not leak as during closing the door mechanism pushes up against the door seal. The seals do not perish as they are made of medical grade silicon "rubber". There is an overflow outlet near the top of the bath to prevent accidental over-filling and to allow topping up the hot water without over-filling.



We are a registered provider for the National Disability Insurance Scheme

Provider Number 68420686



HYDROTHERAPY AIR SPA OPTION

Would you like to relieve the pain from arthritis, rheumatism and body aches?

Here's how



Nearly all of the baths we provide have the Canadian hydrotherapy spa system fitted.

The system is a true hydrotherapy system, not a pool spa. All the components in the system are from C G Air in Canada, and fitted in Australia. This allows us to place the hydrotherapy jets in the bath to fit your individual needs.

People using this have described it as a miracle, relieving the pains of rheumatism, arthritis and circulatory problems associated with limited mobility.

Being an air hydro system, means it can be turned on before you hop in the bath and the 300 watt in-line heater will have the bath environment warm before you hop into the bath and while it is filling.

You can use aromatic oils, Radox or any other pain reliever without harming the system

The image below shows the air jets, you will notice the air comes out of 6 holes around the RIM of the jets. This means the system can deliver very high pressure pulses of air, without drilling holes through you. The control pad in the bath, allows you to control the pressure and the pulse rate to fit your individual needs.



THE HYDROTHERAPY JETS



CONTROL PAD



THE HEART OF THE SYSTEM



HYDROTHERAPY AIR SPA OPTION

The air massage relaxes your muscles while stimulating the production of natural analgesic hormone known as endorphins. The use of an air massage system produces an effect of well-being throughout your whole body. The variable speed makes it completely adaptable to the users' needs, whether soft and caressing or more vigorous.

Making this even more interesting is the "wave" effect where the speed alternates between strong and soft to create a very efficient lymphatic massage.

Automatic Reinfection Control. Twenty minutes after you leave your WINDSOR bath, **the system automatically purges itself** to prevent passing any bacteria [e.g. from a skin infection, tinea etc.] back to yourself or another user.

Safety. The air distributors, as well as the security mechanisms are critical and essential components in all massage systems. The safety mechanisms in your massage system are elements that cannot be ignored. They ensure that the **water will not come into contact with electricity.**

Air Heater. This innovative high quality ceramic air heater was created with a unique design that optimizes the heat exchange through the small openings for a better heat distribution through your system.

The air heater temperature is always calibrated with the selected speed of the blower. When the blower is at 80% of its speed, the heating will function proportionally for the best effect.

Low Noise Level. The blower muffler combined with a special sound damping foam significantly reduces the sound of the motor. This specially designed muffler is integrated within the blower to reduce the overall size of the casing. The muffler has a new design deflector for better air intake. The motor has rubber pads where it contacts the steel frame to reduce vibration and sound.

User Control Settings. From a low power relaxing massage to a much invigorating massage created through a high power air flow, the integrated control is completely variable so **that the user can choose exactly what is needed.**

The hydrotherapy system is a must if you wish to get the best out of your new bath.



INSTALLATION



- Most of our baths go into existing showers, where they are used as a combination bath and shower base.
- If there is an existing drain under the new bath, the drainage kit that comes with the bath includes a flexible HEPLEX pipe that goes straight into the existing floor drain hole.
- A plumber taps into the hot and cold pipes in the wall behind where the new bath is going, and installs 2 stop-cocks [like the small taps where the water goes into your toilet]. He then runs 2 flexi-hoses [not supplied by us] from the stop cocks to the underside of the fast-fill taps that come with your bath.
- With the hydrotherapy spa option, the only additional installation item is a water-proof power point that goes onto the wall behind the new bath. A normal 3 pin plug from the bath goes into the water proof power point.
- The installation is straight forward and can be done by any plumber. If you prefer, we can organise installation on your behalf, let us know if this is your preference.
- Walk-in baths do not need framing, cladding and tiling like a normal bath, making installation simpler.
- Windsor Baths come complete with a fast-fill tap set and a full drainage kit which will reduce your plumbing cost.
- Installation can be done in such a way, that if the bath is removed in the future, the space can be easily and cheaply be made a normal shower.



The ACCESS Model

SPECIFICATIONS

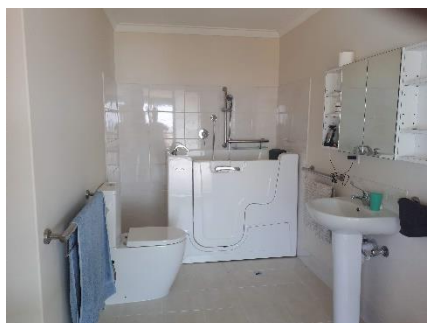
Dimensions (L/W/H):

- 52" x 29" x 42" (1320mm long x 730mm wide x 1066mm high)
- Allow an additional 36" [880mm] for door swing
- Enclosed on 3 sides – side panels removable
- Step size going into bath 12.7 cm [5 inches]
- Maximum power consumption 1100w
- Marine grade, gel coat fibreglass body
- Stainless steel frame
- Electrical power safety rating - IPX5
- Door available on RIGHT or LEFT side
- 60mm waste outlet, adaptor, 90 degree bend, 1 metre Hepflex flexi-hose with fittings
- 6 heavy duty steel levelling legs with rubber base, 50mm height adjustment
- PVC head and seat cushions with suction attachment
- Removable panel under door for servicing and for lifting hoist legs [e.g. Arjo Maxi-lift]
- Optional hydrotherapy system from C G Air Systemes of Canada
- 3 year on-site parts and labour warranty [except in very remote sites and overseas locations – parts only]
- Our baths are available with and without the hydrotherapy spa system option

WINDSOR WALK-IN BATHS



Before and after



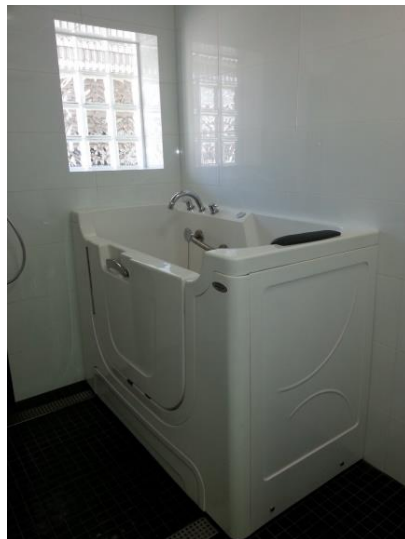


Needing a size smaller?



Please consider our “Compact” model (fits in a shower space)

Needing a size bigger?



Please consider our “Independent) model

Alternative location to a bathroom could be a laundry