



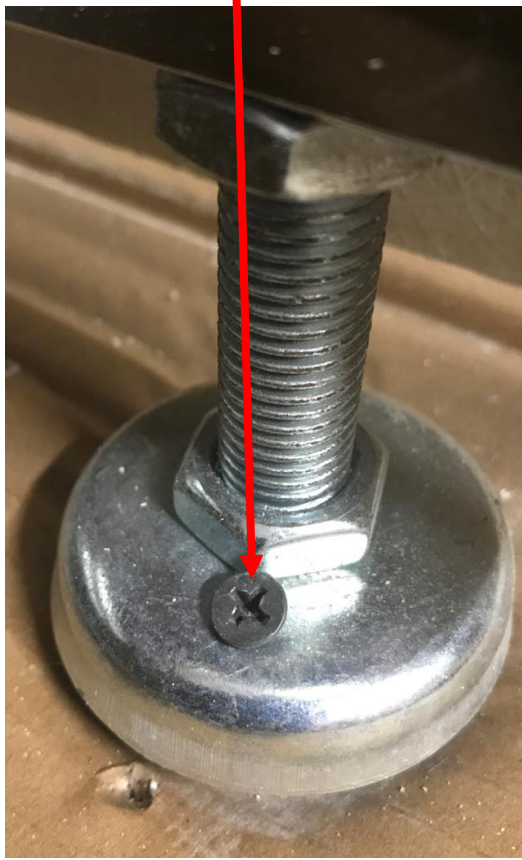
The installation of the Compact model walk-in bath

A couple of tips to keep in mind!



Transport the bath after delivery:

1. Baths transported upright on the pallet may have screws holding 2 legs of the bath to the pallet.
These need to be removed so the bath can come off the pallet.
2. Remove the side panels so you can use the bath frame to move it in its installation spot



NOTE: When installing in a corner, REMOVE the side panel that would have gone into that corner!
This will make the bath sit flush against both walls



Tap and spa power point installation



The tap location is on the same side as the door hinge location

Spa control and overflow location

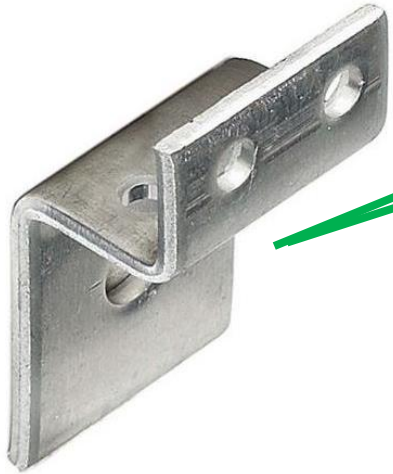
An IP65 (outdoor) rated single power point is required only if the spa option is bought

A: Suggested water OR power point location A.
450mm from the floor, 150mm from the side panel.
Access circle is 200mm high and 30mm wide

B: Suggested water point location B.
450mm from the ground, 150mm from the side panel
Access circle is 200mm high and 30mm wide

Each bath is supplied with a high flow spout and ¼ turn tap handles. These are WaterMark compliant!

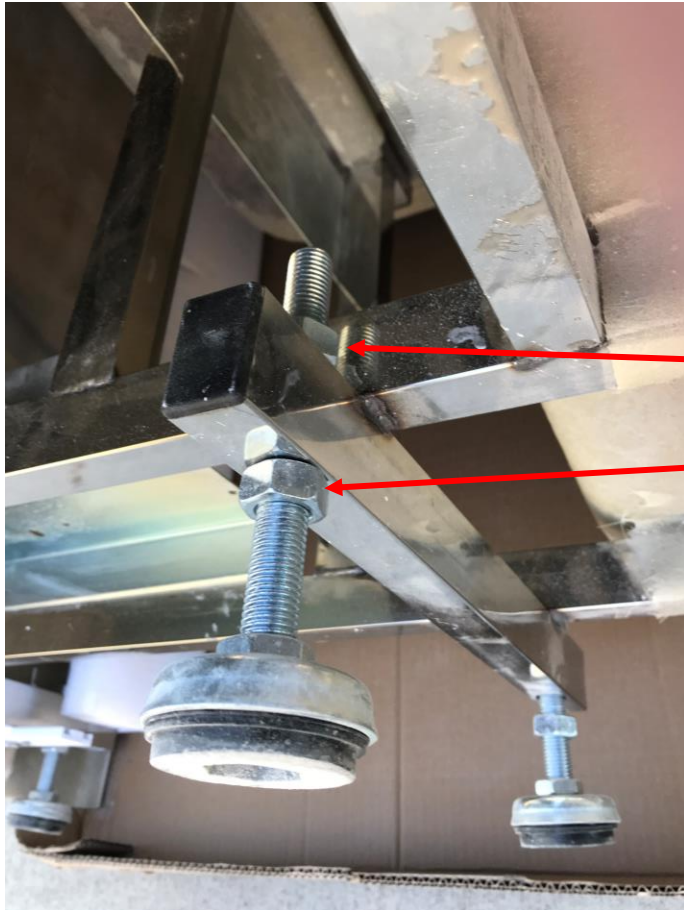
The installation start



Each bath comes with a drain kit and 2 mounting brackets. These mounting brackets give extra support avoiding the bath coming away from the backwall.

IMPORTANT: The bath needs to be installed **totally level!** Please use a water level for this! A great starting point is to install these mounting brackets on the back wall and make sure these are 100% level installed. Position the back of the bath lip over/on the mounting brackets and adjust each individual bath leg till the bath is completely and accurately level.

The drain kit will be covered a little later in this guide.



Feet adjustment – Each feet/leg can be adjusted up or down, as required independently to allow for a 100% water level installation.

After adjustment, make sure both top and bottom nuts are tight to avoid unwanted movement.

Connecting the waste – each bath is supplied with a 1 meter flexible drain hose. Use this and not a fixed pipe! The hose provides “give” as the bath is a stand alone unit – it avoids risk of leaks





Any questions?

Call/text us on Mob 0455 522 566!

